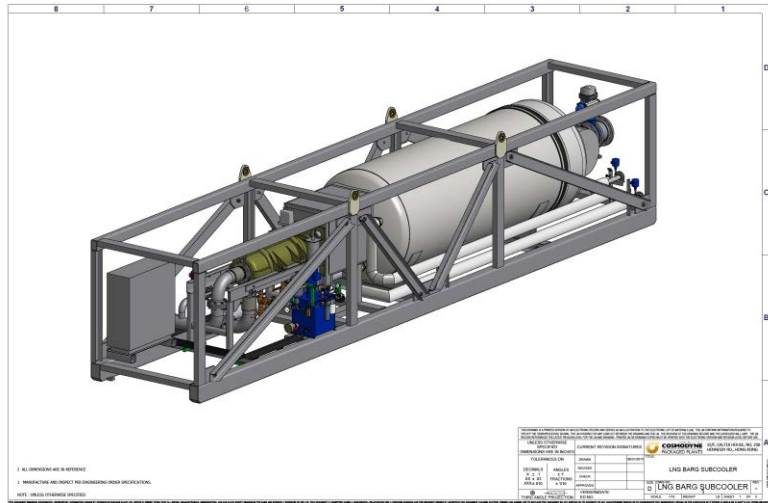


BOIL-OFF GAS MANAGEMENT SYSTEMS

Cosmodyne's boil-off management system is designed to offer a simple and cost-effective solution for various land and marine based applications.

Cosmodyne offers two alternate systems. The first, works with a client's spray pumps to subcool a stream of LNG and collapse tank pressure. Alternatively, we can offer a solution whereby compressed boil-off gas is relieved and sent back to the tank.



- Refrigerant cooling provided with environmentally friendly and safe nitrogen refrigerant.
- All major components designed and manufactured in Cosmodyne's shops (cold box, turbo-expander).
- Comes packaged as two distinct, pre-piped, pre-wired modules: cold box/refrigeration skid (no motors) and the nitrogen compressor skid. Optional air-cooling or sea-water closed-loop cooling system can be provided if client does not have a source of fresh cooling water.
- All equipment can be located in gas safe area. There are no motors in skid containing the heat exchanger. All LNG systems are double-contained; annular space can be purged with nitrogen.
- Can tailor to match client's desired capacity.
- Systems requires a supply of low voltage power, sea water and a small amount of nitrogen make up (for seal losses).
- Eliminates the need for Boil-off gas recompressors.
- Can be designed to meet client's specific shipboard requirements.

Cosmodyne is a leading manufacturer of cryogenic plants with more than 450 placed in operation around the globe since 1958. Cosmodyne LINEX line of natural gas liquefiers produce LNG as alternate fuel for high horsepower marine, rail, mining, trucking, and oilfield applications, virtual pipelines, and utility peak shaving. Cosmodyne is part of the Cryogenic Industries family of companies which include ACD, LLC and Cryoquip, LLC. For more information, visit www.cosmodyne.com.